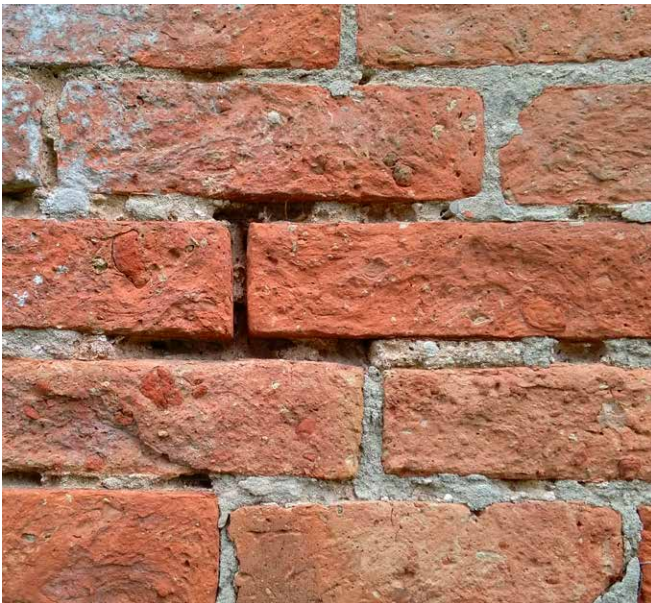




Historic England

Repointing Brick and Stone Walls

Guidelines for Best Practice



Summary

The appearance of brick and stone masonry owes as much to the character of the mortar joints as to the stone and bricks themselves. Unsuitable repointing can affect not only the look but also the durability of masonry, and is amongst the most frequent causes of damage to the character and fabric of historic buildings.

The comprehensive repointing of a building is rarely necessary. Generally only those parts that are most exposed to the weather or are affected by specific problems such as leaking rainwater pipes or gutters are likely to be in need of attention. Sound historic mortar should be left undisturbed as it can be an important part of the character and significance of a building.

This guidance, aimed at homeowners and non-specialist building professionals, provides a brief technical guide to the key issues and stages that need to be considered when repointing brick or stone walls of older buildings.

This guidance note has been prepared by David Pickles with contributions from Alison Henry, John Stewart and Iain McCaig.

Published by Historic England January 2017.
All images © Historic England unless otherwise stated.

For further practical advice on maintaining, repairing and making changes to older homes see:

www.HistoricEngland.org.uk/your-home

Front cover

Top left: Example of friable and deeply eroded joints.
Top right: Removing cement mortar with a sharp chisel.

Bottom left: Repointing rubble stonework.
Bottom right: Matching mortar with a pattie or biscuit.

Contents

Introduction.....1

What is pointing?	1
Why is pointing important?	5
What is repointing?	5
Why is repointing important?	5
Why is repointing necessary?	7

1 Deciding the Scope of Work9

1.1 Getting professional help	9
1.2 Nature and scope of work	9
1.3 Mortar mixes and appearance	9
1.4 Does repointing need consent?	13

2 Repointing.....14

2.1 Preparing the joints	14
2.2 Filling the joints	17
2.3 Protection during the works	17
2.4 Finishing the joints	17
2.5 Protection at completion	24

3 Where to Get Advice.....25

3.1 Historic England website	25
3.2 Further reading	25
3.3 Contact Historic England	26

Acknowledgements.....27

Introduction

What is pointing?

Pointing is the process of filling the outer part of the joints between masonry units with mortar. This can be done either as work proceeds, by striking off the bedding mortar flush with the face of the masonry, or as a separate exercise if the outer part of bedding mortar has been deliberately left recessed or is raked back from the surface.

For brickwork and stonework the width, profile and texture of the joints affect their visual character. Often these respond to locally available materials and can have a local distinctiveness.

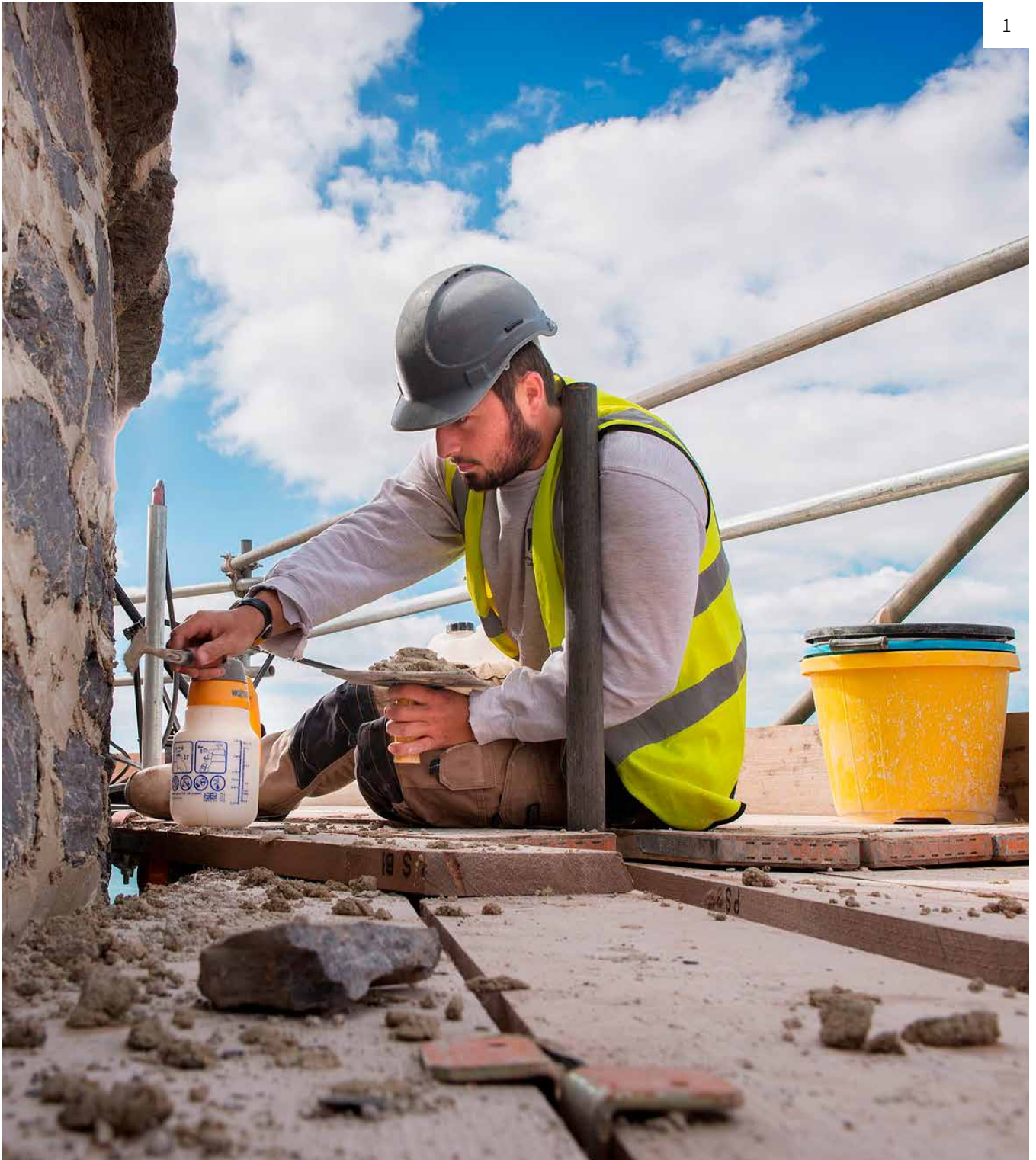
Over the centuries, bricklayers have always tried to make their work look as regular and even as the bricks they were working with would allow. From the Tudor and Elizabethan periods onwards there was a trend towards increasingly narrow joints, as bricks of more consistent size and shape became available. Joint width was associated with status; the higher the quality of the brickwork, the narrower the joints would be, culminating in gauged work when joints could be less than a millimetre wide.

The profile of mortar joints can also contribute greatly to the appearance, regularity and uniformity of brickwork, particularly when the joint widths vary due to the irregularities of the bricks. It can also make the joints appear narrower, as in the case of penny struck joints or tuck pointing.

Similarly, high quality stonework (ashlar) featured narrow joints and regular, even surfaces. In lower status work, such as random rubble walls, joints would often be filled flush, with mortar spreading onto the surface of the stone, to give the wall a smoother, more even appearance. Regular limewashing enhanced the effect and gave protection.

Specialist repointing techniques such as 'tuck pointing' are not covered by this guidance, but further information can be found in the [Practical Building Conservation series](#) particularly in *Mortars, Renders & Plasters and Earth, Brick & Terracotta*.

For further technical information see [Section 3](#) Where to Get Advice.



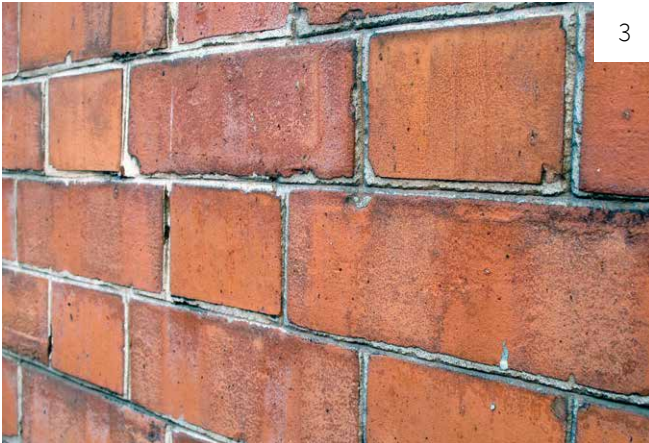
Repointing in progress



2



5



3



6



4



7

Some of the different styles of joint finish used on historic brickwork

2 Flush pointed brickwork, where the outer surface of the mortar lies flush with the face of the wall. This brickwork shows signs of having been limewashed.

3 The mortar is incised so a groove runs through the centre of the joint. This is called penny round or struck pointing.

4 This shows an example of tuck pointing where wide mortar joints between unevenly shaped bricks are coloured to match the brickwork and a narrow 3-5mm joint of lime putty is then placed in scored grooves to create the impression of fine joints and uniform bricks.

5 The mortar joint has been given a convex V-shaped profile which is referred to as beak or double struck pointing.

6 This joint has been indented to form a V-shaped groove which is referred to as keyed pointing.

7 In gauged pointing fine joints between brickwork, usually in arches are filled with lime putty so that the joint almost disappears.



8



11



9



12



10



13

Some of the different styles of joint finish used on historic stonework

8 Ashlar stonework usually has fine joints sometimes just a few millimetres wide.

9 This shows rubble stone flush pointed and incised to give the appearance of regular 'squared work' when limewashed.

10 Squared coursed stone with a flush mortar.

11 Where an irregular facing stone such as flint is used, small pieces of stone, tile or brick are pushed into the wet mortar to reduce the volume of mortar and shrinkage problems. This is known as galleting.

12 This shows squared stone with a narrow flush joint.

13 This mortar joint has been given a convex v-shaped profile referred to as a beak or double truck joint.

Two modern styles of pointing are often found on older masonry but should be avoided as they give the joint too much emphasis against the masonry. They also tend to be associated with hard cement based mortars.



14



15

Weather-struck pointing to brickwork (14)

This is slightly proud of the masonry and smoothed off at an angle.

Ribbon or strap pointing to brickwork (15)

A style similar to weather-struck being proud of the masonry and smoothed off. Often used to give a regular joint width to irregular brick and stone masonry.

Why is pointing important?

The mortar joint is not only a key part of the appearance and character of a masonry wall; it also helps to keep the building dry. It does this in two ways: by preventing rainwater finding its way into the core of the wall or even to the inside face of the building though the joints between the bricks or stones; and by allowing moisture already in the wall to dissipate once weather conditions become drier.

When rainwater hits a building some of it may be absorbed by the stone or brick and the mortar, and some is drawn into the wall via any small cracks between the masonry units and the mortar. To prevent problems occurring, this moisture needs to be able to escape back to the atmosphere once its stops raining. The most effective route for this is through permeable mortar joints. However, if the joints are not able to release moisture, as would occur if hard cement mortar is used, then all moisture movement is concentrated in the bricks or stones, which increases the chance of frost damage or damage due to the crystallisation of soluble salts.

What is repointing?

Repointing is the refilling of the outer part of the joints where the previous mortar has weathered away or has been removed because it is unsuitable. Some older brick and stone buildings show signs of having been repointed at different times, often with a variety of mortar mixes and styles.

Why is repointing important?

Repointing can significantly affect not only the look but also the durability of masonry. If done badly or using the wrong materials, it can damage stone and brickwork, sometimes beyond repair.



16



19



17



20



18



21

Examples of good repointing (16-18)

16 The mortar joint has a good colour and texture to complement the brickwork and carefully follows the variable joint widths.

17 This stone work has been given a carefully incised joint to match the original work.

18 Rubble stone repointed flush with the aggregate exposed to give a good texture.

Examples of poor repointing (19-21)

19 A cement mortar has been used on rubble stonework. The mortar is cracking thereby trapping moisture and accelerating decay.

20 This shows damage to soft brickwork by the use of cement mortar.

21 A ribbon cement mortar has been applied here over rubble stonework.

Why is repointing necessary?

Masonry walls need to be able to regulate water penetration and evaporation. If the condition of the mortar joints is poor or if the wrong mortar has been used for repointing in the past, then this process can be compromised.

There are three main reasons for repointing:

- Mortar joints are crumbling or loose
- Mortar joints are open or have weathered back to such an extent that the edge of the masonry units are exposed forming a ledge that encourages water to seep into the masonry
- A hard impermeable cement-based mortar (usually grey in colour) has been introduced trapping moisture and accelerating the deterioration of the masonry. Mortar of this type should only be removed if this can be done without causing even more damage to the adjoining masonry. The style of repointing may also be visually unsuitable

Repointing is usually only necessary on more exposed parts of a building, low level areas affected by rising damp or areas affected by specific problems such as leaking rainwater

goods, so sound existing mortar should always be left alone. Lime mortar with some surface loss may still be performing well and if it takes much effort to remove it the chances are that it does not need to be replaced. It may feel a little soft but this may still be acceptable.

Where masonry is clearly decaying it is important to identify the true cause so that the correct remedies can be selected. The pointing itself may not be the cause of the problem so the condition of the whole structure should be reviewed along with the severity of exposure, and any defects contributing to deterioration of the pointing should be remedied before repointing is carried out.

Professional condition survey

An independent condition survey of an older property should be undertaken by a professional such as an architect, surveyor or architectural technologist who is familiar with older buildings and their associated problems. Consider using a professional who is accredited in building conservation.

See our website pages [Finding Professional Help](#)



Poor repointing

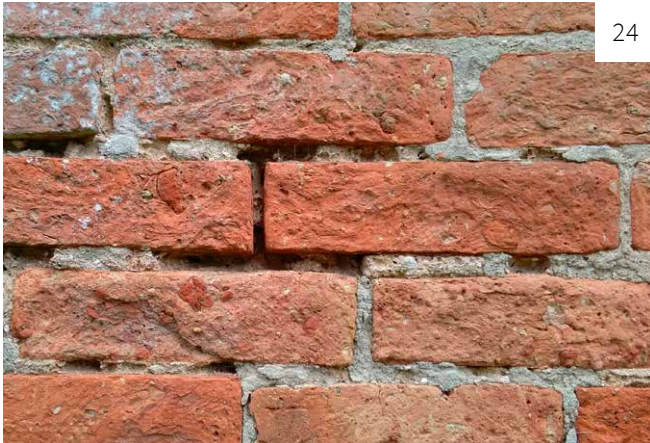
The pointing on the left has been sloppily carried out which has a significant visual impact not only on the building itself but the wider streetscape.



23



26



24



27



25



28

Assessing condition

23 If a sharp tool can be driven into the surface of a lime mortar joint it does not mean that repointing is necessary. However, if there are open or poorly filled joints that offer no resistance at all then selective repointing will be required.

24 This shows the joints which are friable and deeply eroded. Wind-driven rain can make its way into the core of the wall through open joints.

25 This joint dating from the 18th century shows signs of gradual erosion of the mortar due to weathering, but it is still performing satisfactorily and can be left alone.

26 Cement mortar applied over a stone joint. The hard mortar is cracking and potentially trapping moisture which will damage the stonework.

27 This stone wall has been repointed with a cement mortar which has driven moisture up the wall and caused decay higher up in the zone of evaporation.

28 This shows sound lime mortar below a shallow layer of cement repointing mortar which is cracking and falling away.

1 Deciding the Scope of Work

1.1 Getting professional help

If a visual inspection indicates that some repointing may be necessary (see [Why is repointing necessary?](#)) professional help may be required to establish how much of the wall to repoint, and what type of mortar and style of repointing to use. Professional help may also be required to carry out the repointing.

Going directly to a building contractor may provide the advice and service needed if the works are minimal but it is important to find out about the contractor's experience and competency with this type of work, particularly their experience using lime mortars rather than cement mortars.

Repointing might be carried out as part of a larger work programme in which case the main contractor may bring in a sub-contractor to carry out the repointing work.

For more extensive works and for buildings that are historically significant, such as listed buildings or ones in a conservation area, the help of a surveyor or architect might be needed to specify and oversee the works. Although this might seem like an unnecessary expense it can help to ensure that the work is carried out properly and avoid expensive mistakes or failures.

Our website has advice on [Finding Professional Help](#).

1.2 Nature and scope of work

Various issues need to be agreed before work starts:

- Areas requiring repointing may need to be established by physically testing the pointing. Loose mortar can be identified by tapping with a chisel. If it sounds hollow this may indicate that the mortar has detached from the backing. This is particularly the case where thin cement mortars have been used over older lime mortars.
- What different styles, profiles, textures and colours of repointing have been carried out in the past and are these suitable in terms of appearance and permeability for the existing masonry? Is it possible to identify the original or earliest pointing?
- Will different mortar mixes be required for different areas?

1.3 Mortar mixes and appearance

It may be possible to find a sound example of pointing in a sheltered part of the building, for example under the eaves or behind downpipes, particularly on north and east elevations, that is contemporary with the initial construction.

For domestic buildings constructed before the early 20th century, this will almost certainly be a lime-based rather than a cement mortar. A close inspection of the mortar will help determine how the joints are finished and whether the aggregate

is coarse or fine grained. There may be other additions, such as ash or bits of broken brick or shell, that contribute to the character of the mortar. This can then be used as the basis for designing a new mortar and joint finish to match the historic pointing. In choosing an example to copy, care should be taken to ensure that it is not later inappropriate work that is selected.

Patch repointing may initially look clean and bright compared to surrounding original mortar that is retained. Providing the new mortar mix is a good match for the existing mortar it will soon weather and tone down so that the contrast between old and new is less marked.

A mortar mix that is compatible with the permeability of the particular stones or bricks in

the wall and suitable for the degree of exposure should be chosen. The key principle is that the mortar should be slightly weaker and more permeable than the stone or brick. Mortar that is less permeable than the masonry, such as most cement-based mortars, will prevent moisture from evaporating out through the joints. Instead moisture will move largely through the stones or bricks, increasing the rate of decay and leaving the hard mortar standing proud.

Mortar that is harder than the masonry is at risk of cracking and causing mechanical damage to the stone or bricks. For this reason the inclusion of any cement-rich mixes should be avoided. Mixes will vary considerably according to circumstances from pure lime putty with no aggregate to 1 part binder to 3 parts aggregate.



Mortar samples

This shows mortar 'patties' or 'biscuits' that have been based on an analysis of the historic mortar which is sometimes necessary on very significant historic buildings.

They can then be used *in-situ* to check for a suitable match to the existing mortar and the preparation of sample panels.



Pointing trial panels

It is always worth experimenting with various mixes to see which works best in the context. A discreet area should be selected for these to be done. Sample panels

can also be used where consent is required prior to the work commencing.

Samples

Preparation of samples can be a cost-effective way of assessing what mortar mix to use in a particular context. Samples allow everyone involved to agree on the best approach before any work begins and can be left in place as standard that the actual work should meet.

Work involving new mortars on listed buildings or ancient monuments may require a number of sample mortar 'patties' or 'biscuits' to be

made as part of the consent process prior to the work commencing.

Once the samples have been discussed, the mortar mixes that look most suitable should be used to do a trial panel of repointing on the wall. These should be properly finished and allowed to dry so that the final appearance can be judged and a decision can be made on which mortar mix to use.

The strength of mix also needs to be related to the degree of exposure. Areas such as parapets and chimney stacks usually require relatively stronger mixes than more sheltered areas.

If the building to be repointed is of particular significance, for instance it is listed, it may be necessary to accurately match the historic mortar by sending a sample to a specialist in historic mortars for analysis. This will give information on the aggregates and binders used in the original mix which can be used as a guide for the repair mortar.

Types of lime

There are two main types of lime that can be used in mortar mixes:

- Non-hydraulic lime
- Natural hydraulic lime (NHL)

Non-hydraulic lime

Non-hydraulic lime is the most permeable of all binders. It hardens very slowly by reacting with carbon dioxide in the atmosphere. Non-hydraulic lime mortar has good adhesive properties and can accommodate some movement. It is suitable for repointing in sheltered locations or for use on soft, permeable masonry or brick. Non-hydraulic lime is available in two forms, lime putty and powder:

- **Lime putty**
The best quality non-hydraulic mortars are made from mature lime putty- a stiff whitish coloured paste – which is supplied in sealed plastic tubs. Pre-mixed mortars made with lime putty are also available from specialist suppliers. Lime putty and lime-putty mortars can be stored indefinitely in airtight containers protected from frost.

- **Non-hydraulic powdered lime (known as hydrated lime)**

This powdered lime is widely available at builders' merchants and is usually used with sand in cement-based mortars. However, it can also be used to make non-hydraulic lime mortar. Best results are obtained if the lime has recently been manufactured. It can either be mixed with water to make lime putty, which can then be added to aggregate to make mortar, or it can be mixed directly with aggregates and water to produce mortar. The properties of mortar made with powdered non-hydraulic lime and lime putty are similar.

- **Non-hydraulic lime with hydraulic additives (pozzolans)**

When non-hydraulic lime mortar is mixed with certain additives known as pozzolans (such as finely ground brick dust, for example) it will develop strength more quickly whilst still having a good level of workability. Pozzolanic mortars have slightly less permeability than pure lime putty mortars. Such mortars may be suitable for use in more exposed locations than pure non-hydraulic mortars. Pozzolans should always be added immediately before the mortar is used. Cement is not a suitable additive for lime putty mortar.

Natural hydraulic lime

Natural hydraulic lime (NHL) is widely available and is supplied as a ground powder that sets by chemical reaction with water as well as by a longer term reaction with carbon dioxide. Its initial set is faster than non-hydraulic lime but the actual rate is dependent on temperature and strength. It is available in three different strengths (NHL2, NHL3.5, NHL5). Hydraulic lime mortars have lower permeability and higher compressive strength compared to non-hydraulic mortars, and may be appropriate for use in locations that are permanently wet or very exposed.

The terms ‘hydrated’ and ‘hydraulic’ are often confused by contractors and builders’ merchants. ‘Hydrated’ refers to the process of converting burnt limestone to a lime binder by the addition of water, and all commercial limes (both non-hydraulic and hydraulic) are hydrated. ‘Hydraulic’ describes lime that sets partly due to a chemical reaction with water.

When considering which type of mortar to use, three issues need to be considered by the specifier:

- The type of masonry being repointed – less permeable and denser materials can accommodate stronger mortars, such as hydraulic lime mortars, if extra strength is needed due to exposure.
- The condition of the masonry – masonry that is decayed and highly permeable will require weaker mortar.
- The degree of exposure – areas of high exposure such as a chimney or roof parapet can require stronger mortars.

Aggregates

The aggregate contributes to the colour, texture and performance of lime mortar. There is a wide range of aggregates suitable for making mortar. The most common aggregate used today is sand. Most sands are composed of grains of quartz (silica) but calcareous sand or crushed well-graded limestone is a useful addition to non-hydraulic and pozzolanic mortars as it helps to speed up carbonation. However, fine ‘stone dust’ should be avoided or only added in small quantities to help achieve a particular colour, because if used in large volumes it increases the risk of the mortar shrinking as it dries.

For many general applications nowadays, a well-graded aggregate, containing a range of particle sizes, will be appropriate. The size of the aggregate particles is usually adjusted to suit the width of the mortar joint; coarse grit may be included in a mortar for rubble stonework whereas for the narrow joints of ashlar stone or some brick, fine-grained sand or crushed limestone may be suitable.

Historically, other materials such as crushed chalk, wood and coal ash, crushed shells and crushed brick were also used for making mortar. These materials are available from specialist suppliers and may be needed to create new repair mortars to match the character of existing historic mortars. More detailed information can be found in [Practical Building Conservation, Mortars, Renders & Plasters](#).

1.4 Does repointing need consent?

For listed buildings or buildings that are scheduled monuments, consent will usually be needed before any repointing is carried out. A sample of the pointing proposed may need to be agreed before works commence. Work to buildings in conservation areas could require consent depending on the degree of planning controls in place.

In all these cases the local planning authority should be contacted well before the planned start date of work to establish what is required.

2 Repointing

As well as deciding on the extent of work and proposed joint finish before works start, it is also important to consider the likely weather conditions. Work with lime mortars should be avoided during extremes of temperature, such as very cold or very hot days or during very windy weather. If possible, work should be carried out in the spring, summer or early autumn. Provision should be made for suitable protection from sunshine, rain and wind, both during the work and at completion, to prevent rapid drying which would damage the mortar before it has set properly. If work has to be done during the winter, protection against frost will also be needed.

2.1 Preparing the joints

Once areas of defective pointing have been identified they can be carefully raked out manually using hooked tools or masonry chisels to a depth of at least twice the height of the joint, although on rubble stonework it will often be much deeper than this. On stonework with variable joint widths it will be necessary to decide what the average joint width is.

For the repointing of finely jointed work, which is rarely necessary, a hand-held saw blade is a suitable tool for cleaning out the joint.

Whatever method is used, it is important that mortar is removed from the top and bottom of the joints leaving a square-cut joint. Dust and debris must be removed from the joints using brushes or even a vacuum cleaner and thoroughly rinsed with water so that no loose dry material is left. The masonry must be thoroughly dampened with a hosepipe with a spray nozzle or a pump-action water sprayer, before placing the mortar. This is to reduce suction, improve adhesion of the mortar and prevent the mortar from drying too quickly.

Use of power tools

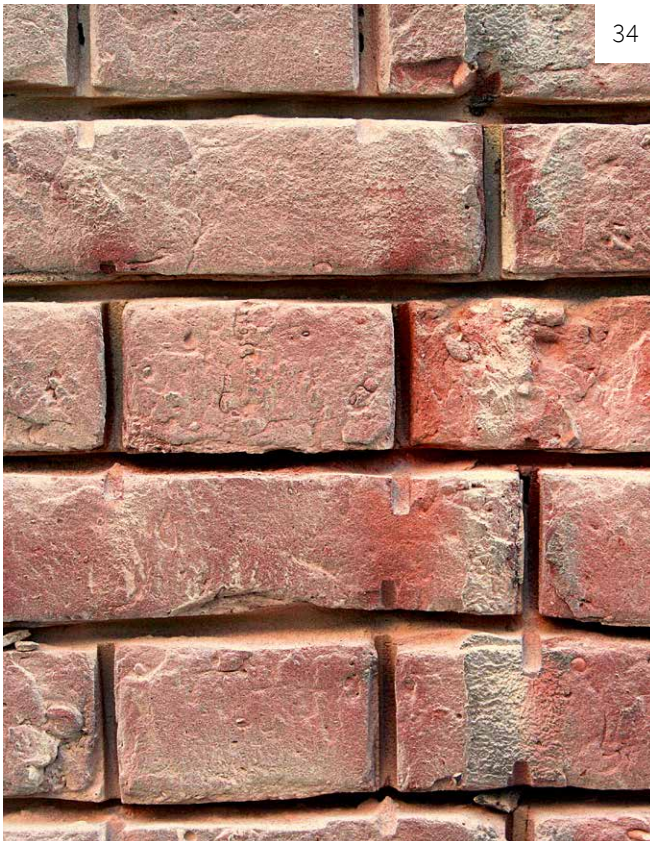
The use of power tools, such as angle grinders to remove pointing is not recommended because these do not completely remove old mortar from the joints and can easily damage the face of the masonry. They create a lot of dust so it is very difficult to keep track of where the blade is. However, where there is hard cement rich mortar it may be necessary to use a thin diamond-disc cutter to *very carefully* make an initial breach along the centre of wide joints, so that the loose mortar can then be removed with a hammer and sharp chisel to avoid damage to the corners of the masonry. Alternatively, a masonry drill can be used to drill a line of holes along the centre of the joint which will make it easier to break up the mortar with a hammer and chisel.



33



35



34



36



37

Removing cement mortar

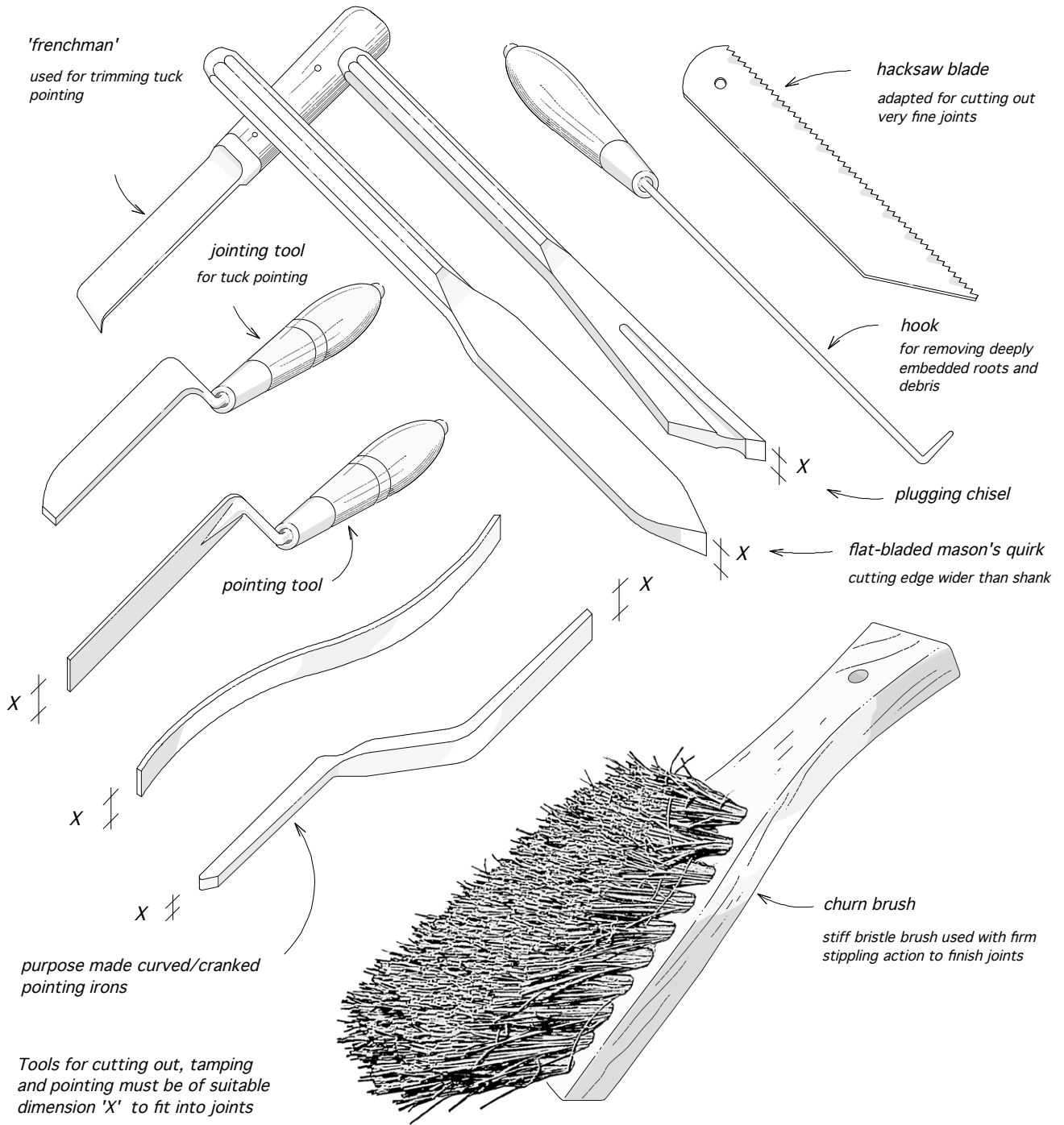
33 Shallow hard cement mortars tend to crack and loosen as they have no flexibility. They can often be removed with a tungsten-carbide tipped chisel as shown here.

34 These bricks have been damaged by the use of an angle grinder for cutting out mortar.

35 A pneumatic chisel being used to break up hard cement mortar along the centre of the joint.

36 Mortar being raked out with a hammer and chisel.

37 Mortar dust being removed from the joints with a brush.



Tools for repointing

Pointing trowels and jointing tools which are wider than the joints to be filled are best avoided as they cannot achieve complete packing of open joints at depth and risk smearing mortar on the surface of the masonry.

2.2 Filling the joints

Once preparation work has been completed then filling the joints can start.

Repointing with lime mortars should generally be carried out by an experienced contractor but the skills can be mastered by inexperienced contractors and practically minded homeowners. However, the use of lime mortar is very different to that of cement. It is important therefore to obtain sufficient training before undertaking repointing work using lime mortars. A number of organisations provide practical training work using lime mortars on historic buildings.

Contact with any form of lime can cause severe irritation to skin and eyes. Powdered lime can also cause respiratory irritation. Protection such as face masks, eye protection and gloves should be used when handling lime.

2.3 Protection during the works

Once the repointing is underway it is important to protect it from wind, rain and strong sunlight, to avoid damage or rapid drying. Particular care is required to avoid damage from frost when pointing has to be carried out in cold weather.

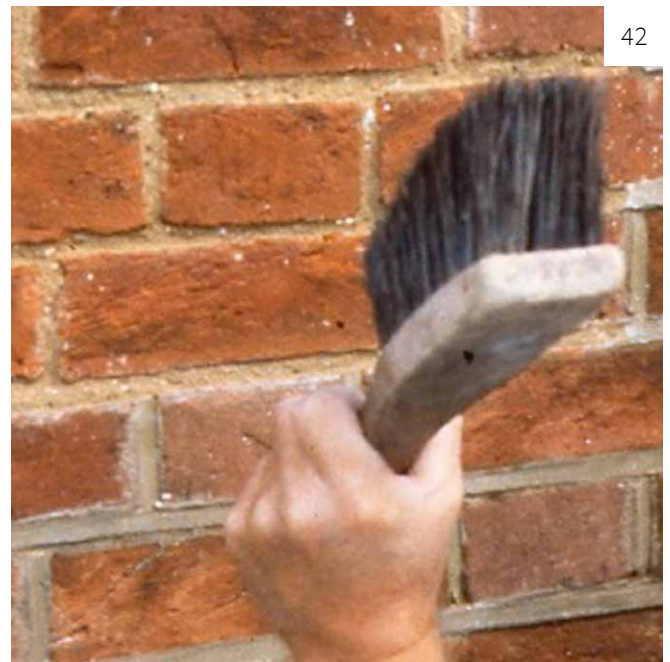
Surfaces should be protected with ventilated covers (multiple layers of hessian, thick blankets or carpet underlay are often used) and regular mist spraying may be needed to maintain damp conditions as the mortar starts to set. Additional plastic sheeting or tarpaulins draped in front of the hessian covers may also be needed if it is very windy or there is driving rain.

2.4 Finishing the joints

The mortar is ready for finishing when it is still damp but has a semi-hard leathery consistency so that it can be marked with a thumbnail, but a thumb pressed into the surface leaves barely any impression.

For joints that are not specially treated a flush finish is usually suitable.

Where edges of the masonry are decayed the mortar may be set back to be within the original joint width so as to avoid visually widening the joint. However, this may provide less protection to the stonework so should only be done following an assessment of the condition of the masonry.



Brick joint filling

39 This shows a selection of the tools, lime mixes, sands and aggregates used for repointing works.

40 The mortar should be packed firmly into the joint using a pointing iron after all the loose material has been flushed out and the joint wetted first to reduce suction. The inside surfaces of the joint need to be damp but not wet.

Joints need to be thoroughly filled from the back and compacted to avoid voids, and be built up in layers of around 25mm deep.

41 The joint should be filled slightly proud of the intended finished level to allow for slight shrinkage and compaction of the mortar as it firms up. Any mortar that is smeared on the masonry should be sponged off with clean water before it has dried.

42 In masonry which is not finely finished, such as this wide-jointed brickwork, the joint can be finished by hitting the mortar with a bristle churn brush with a firm pushing action. This gives a natural weathered appearance by exposing some of the aggregate in the mortar. The use of the brush also helps to compact the joints and increases the surface area which aids drying. However, it is important the mortar is sufficiently set for this otherwise the brush will leave a series of pin-holes in the mortar.



Flush pointing rubble stonework

43 Mortar being placed into raked out and wetted joints.

44 The mortar is being placed over the edges of the stones to bring it flush.

45 This shows the mortar in place which is starting to 'firm up'.

46 Here the mortar is being pushed back to close up any shrinkage.



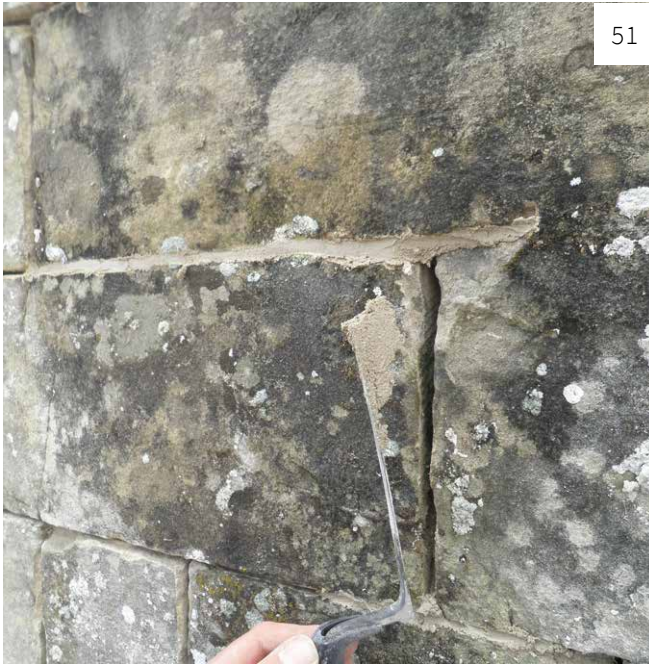
Flush pointing rubble stonework (continued)

47 This shows the mortar after being pushed back.

48 Once firm excess mortar can be scraped away with a small trowel.

49 The mortar is being hit with a churn brush to leave an open grained texture.

50 The completed repointing drying out.



51



52



53



54

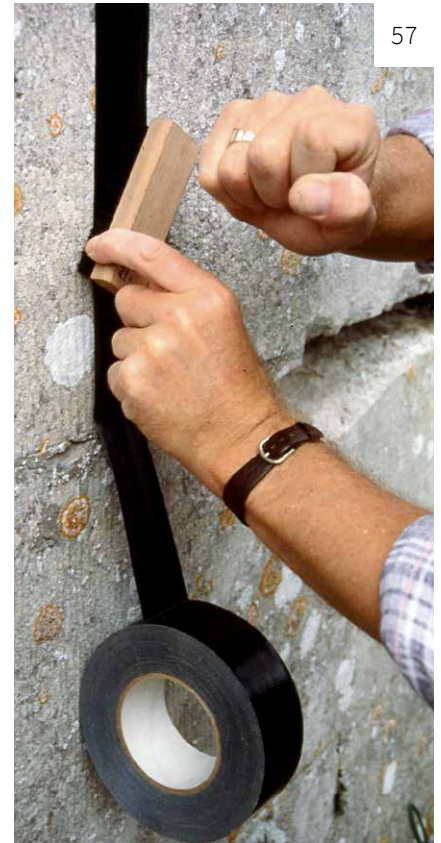
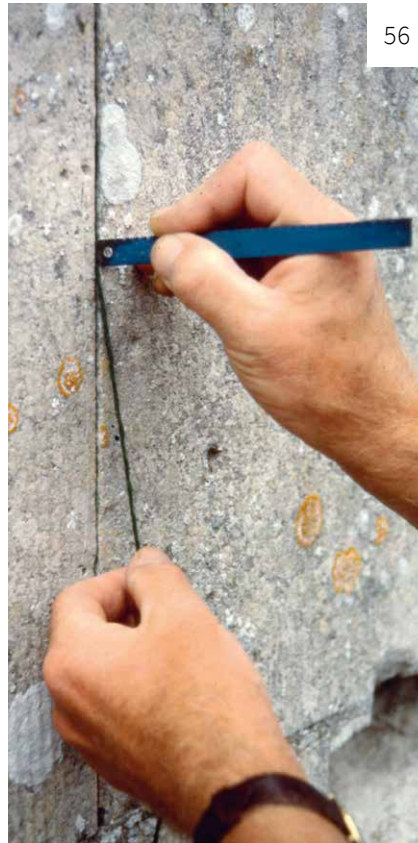
Repointing regular stone masonry joints

51 A wedge of mortar being inserted into the joint with a pointing iron.

52 Using tools that match the width of the joint allows the mortar to be compacted ensuring a fully filled joint.

53 The mortar being hit with a stiff bristled churn brush to compact the mortar, remove laitance and expose the aggregate.

54 The completed work.



Repointing narrow ashlar joints

55 Removal of mortar with a hacksaw blade.

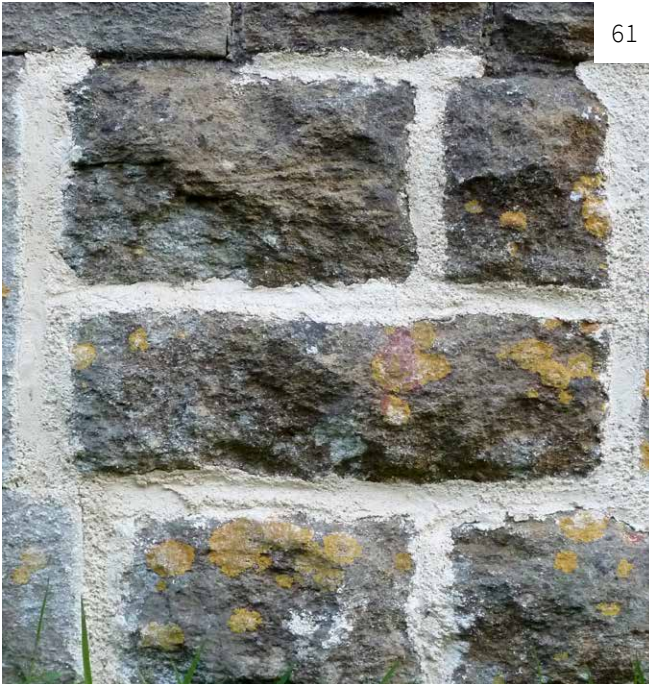
56 Insertion of neoprene backing rod into the joint.

57 Application of plastic faced adhesive tape over the joint to prevent smearing mortar during pointing.

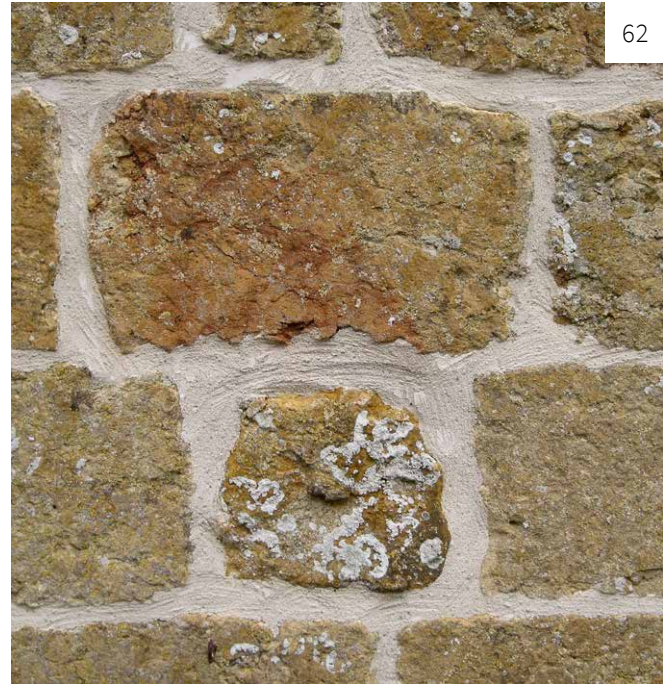
58 Incision of the tape through the joint.

59 Pressing mortar into the joint using a pointing iron.

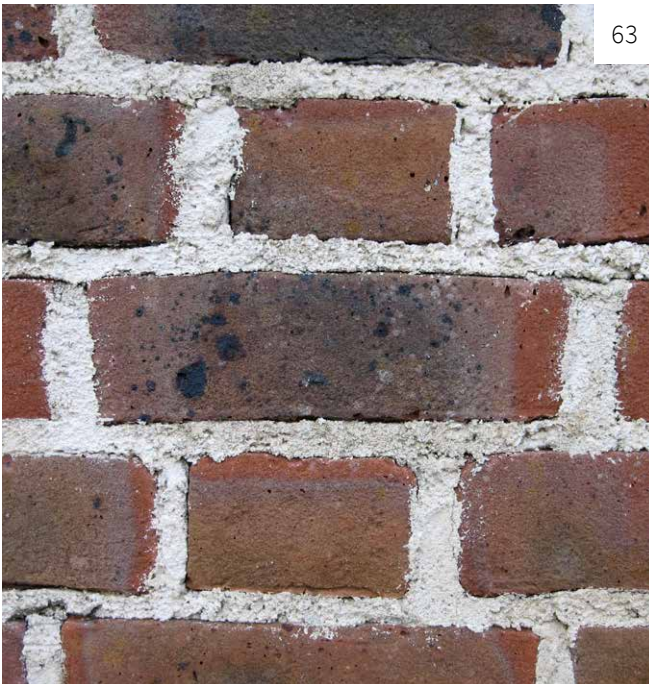
60 The filled joint after removal of adhesive tape.



61



62



63



64

Problems with repointing

61 This repointing was finished too early- the brush has left pin-holes. The mortar has also dried too quickly bringing lime to the surface of the wet mortar resulting in a light bloom.

62 This repointing was left too long before finishing. It required a wire brush to expose the aggregate, resulting in marks in the mortar which detracts from its appearance.

63 This shows a lime mortar which has been applied too wet. It has not been compacted and there is much shrinkage.

64 The mortar here has been smeared over the adjacent stone and is showing signs of shrinkage.

2.5 Protection at completion

Once the repointing is finished it is important to maintain protection as described in 2.3 until the mortar has cured sufficiently to resist damage by rainfall or frost.

The length of time protection is needed depends to a large extent on the weather conditions and type of mortar used. A minimum of a week is recommended but the longer the better particularly in extremes of weather, and for work carried out in the autumn. While all types of mortars will benefit from good aftercare, mortars based on non-hydraulic lime binders need the greatest amount of attention.



New pointing being protected

65 Thick blankets or carpet underlay are very effective for maintaining a humid environment as the mortar cures. They absorb more water than hessian and stay damp for longer.



66 Hessian being used to protect some completed repointing to a stone wall.

3 Where to Get Advice

3.1 Historic England website

The Historic England website provides a wide range of advice for owners of older homes including maintenance and repair, how to get professional help as well as links to various amenity societies who can offer advice on buildings of specific periods:

www.HistoricEngland.org.uk/your-home

More information can be found at:

<https://www.historicengland.org.uk/advice/technical-advice/buildings/practical-building-conservation>

Building Conservation Directory

A range of articles are available on many aspects of the care and repair of older buildings:

www.buildingconservation.com

3.2 Further reading

Practical Building Conservation series

This series of fully illustrated books provide detailed guidance on understanding deterioration, assessment and care and repair:

- *Basics* (2013)
- *Earth, Brick & Terracotta* (2015)
- *Mortars, Renders & Plasters* (2012)
- *Stone* (2012)

3.3 Contact Historic England

East Midlands

2nd Floor, Windsor House
Cliftonville
Northampton NN1 5BE
Tel: 01604 735460
Email: eastmidlands@HistoricEngland.org.uk

East of England

Brooklands
24 Brooklands Avenue
Cambridge CB2 8BU
Tel: 01223 582749
Email: eastofengland@HistoricEngland.org.uk

Fort Cumberland

Fort Cumberland Road
Eastney
Portsmouth PO4 9LD
Tel: 023 9285 6704
Email: fort.cumberland@HistoricEngland.org.uk

London

1 Waterhouse Square
138-142 Holborn
London EC1N 2ST
Tel: 020 7973 3700
Email: london@HistoricEngland.org.uk

North East

Bessie Surtees House
41-44 Sandhill
Newcastle Upon Tyne
NE1 3JF
Tel: 0191 269 1255
Email: northeast@HistoricEngland.org.uk

North West

3rd Floor, Canada House
3 Chepstow Street
Manchester M1 5FW
Tel: 0161 242 1416
Email: northwest@HistoricEngland.org.uk

South East

Eastgate Court
195-205 High Street
Guildford GU1 3EH
Tel: 01483 252020
Email: southeast@HistoricEngland.org.uk

South West

29 Queen Square
Bristol BS1 4ND
Tel: 0117 975 1308
Email: southwest@HistoricEngland.org.uk

Swindon

The Engine House
Fire Fly Avenue
Swindon SN2 2EH
Tel: 01793 445050
Email: swindon@HistoricEngland.org.uk

West Midlands

The Axis
10 Holliday Street
Birmingham B1 1TG
Tel: 0121 625 6870
Email: westmidlands@HistoricEngland.org.uk

Yorkshire

37 Tanner Row
York YO1 6WP
Tel: 01904 601948
Email: yorkshire@HistoricEngland.org.uk

Acknowledgements

Images

© Historic England

All images, unless stated below

© Other

31: Graham Abrey

34: SPAB

51-54: Tom Beattie

55-60: John Ashurst Estate

36-37: South Somerset District Council

65: Sally Strachey

Every effort has been made to trace the copyright holders and we apologise in advance for any unintentional omissions, which we would be pleased to correct in any subsequent editions.



Historic England

We are the public body that looks after England's historic environment. We champion historic places, helping people understand, value and care for them.

Please contact guidance@HistoricEngland.org.uk with any questions about this document.

HistoricEngland.org.uk

If you would like this document in a different format, please contact our customer services department on:

Tel: 0370 333 0607

Fax: 01793 414926

Textphone: 0800 015 0174

Email: customers@HistoricEngland.org.uk

All information and weblinks accurate at the time of publication.

Please consider the environment before printing this document

HEAG144

Publication date: January 2017 © Historic England

Design: Historic England