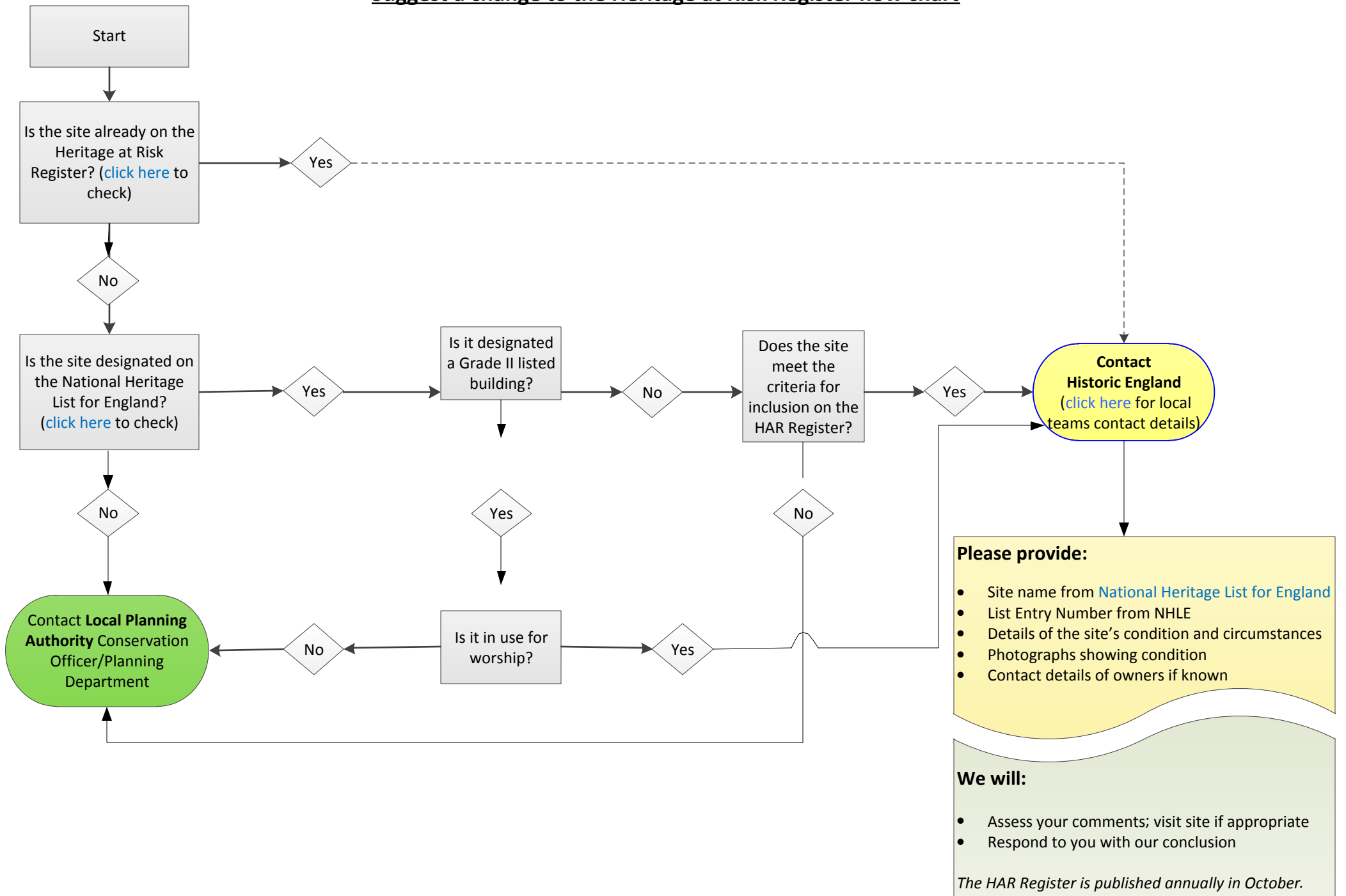


## Suggest a change to the Heritage at Risk Register flow chart



**Please provide:**

- Site name from [National Heritage List for England](#)
- List Entry Number from NHLE
- Details of the site's condition and circumstances
- Photographs showing condition
- Contact details of owners if known

**We will:**

- Assess your comments; visit site if appropriate
- Respond to you with our conclusion

*The HAR Register is published annually in October.*

If you require an alternative accessible version of this document (for instance in audio, Braille or large print) please contact our Customer Services Department:

Telephone: 0370 333 0607

Fax: 01793 414926

Textphone: 0800 015 0516

E-mail: [customers@HistoricEngland.org.uk](mailto:customers@HistoricEngland.org.uk)